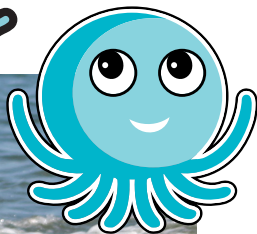


# Ocky



Lifetime Warranty

## 2.7 METRE SIT-ON-TOP Stackable, Maintenance Free

The Ocky is a robust sit-on-top that is 2.7 metres long and, at 16kg, is lightweight for easy lifting & carrying.

The extra wide seat takes larger adults in comfort or allows a small child passenger to sit between your legs.

In addition to hand toggles at each end (for easy 2 person carrying) there is a moulded hand-hold at the centre for simple 1 person portability.

The storage-well at the rear will take most items needed for your paddling pleasure. You can expand your cargo options with a cheap-but-effective dry-bag under the elasticised cargo-strap or a fully self-contained utility-box. The Utility Box can be detached from the Ocky in seconds and is a transportable storage container with a carry handle.

The deck profile allows the Ocky to stack with another Ocky, the Foxx or the Squid and makes transporting (on a car or trolley) and storage easy.

The Ocky can be upgraded with a deluxe backrest & the bars that the backrest attaches to are moulded-in (not riveted or screwed on) for secure attachment.

With all the standard Australis Performance Paddling Features (front-to-rear "rocker", soft chines on the front and hard chines on the rear, a tapered bow and a moulded-in keel) the Ocky is a little ripper, especially in the surf!!

To feel what the best 2.7 metre sit-on-top feels like on the water, take the Ocky for a spin today!!

### Specifications:

- Length: 2.7 m (8'10")
- Width: 78 cm
- Depth: 28 cm
- Weight: 16 kg

### Paddler Profile:

- Beginner to Experienced
- Child to Adult



### Recommended for use on:

- Flat water & Surf
- Bays, Estuaries, Rivers & Lakes

### Ideal to use for:

- Family fun
- Fitness
- Surfing
- Hire fleets



### Paddling Characteristics:

- Extremely stable & a great performer on the water
- Super easy to keep on a straight course
- Very responsive when quick turning is required
- Lifts over waves, chop and swell with ease
- Surfs down waves like magic
- A smooth ride courtesy of in-built rocker
- Very smooth to paddle & surprisingly dry for a sit-on-

1.5 litre pod between your legs



Utility Box secured by Cargo Strap



- AAA Rating**
- 100% Australian Made
- 100% Australian Designed
- 100% Australian Owned

(02) 4285 2000  
www.canoes.com.au

### Accessories that will add to the safety & enjoyment of your Ocky sit-on-top kayak:

- Personal Floatation Device (PFD)
- Backrest
- Paddle leash
- Foam plugs
- Dry bags
- Protective clothing including hats, jackets & boots
- Trolley (take apart & store in rear storage well)
- Cargo strap to secure your goods in storage-well
- 30 litre Utility Box with handle & round hatch (can be colour co-ordinated to your craft)



### Options/Upgrades:

- Backrest (ask about our special "Package Price")
- 1.5 L pod between your legs (round hatch access)
- Upgrade from the free "Powerblade" paddle that is included in the package, to a "Banjo" paddle
- Colour Options:
  - Wide variety of single colours
  - Wide variety of 2 colour fades
  - Wide variety of granite colours

good clean fun™

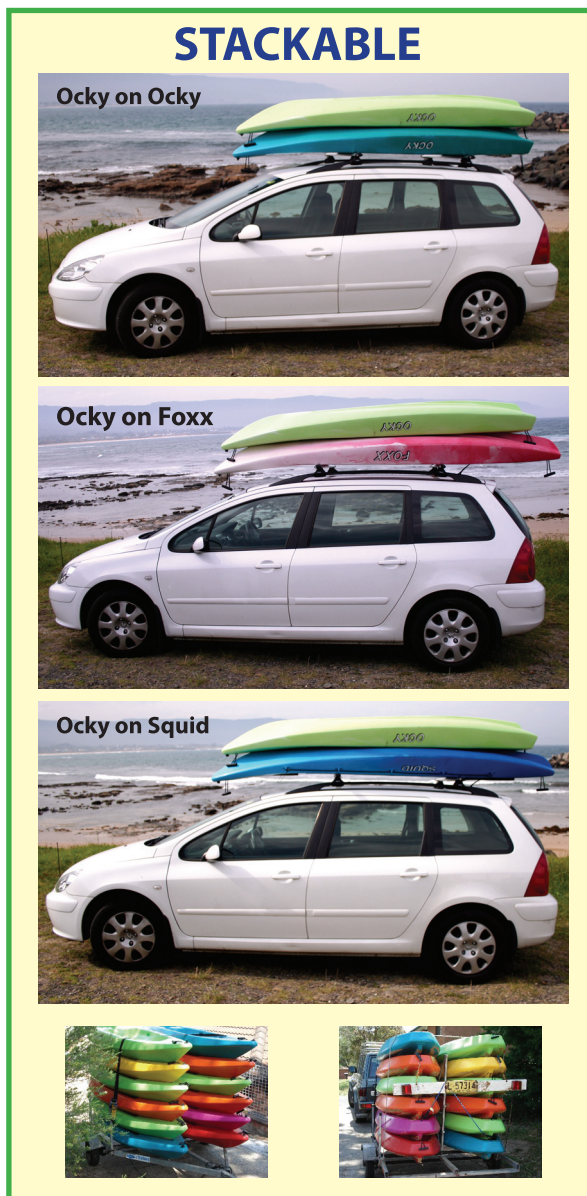


All of the significant ingredients come from Australia, & all manufacturing has been carried out in Australia

# 11 features that make the Ocky the best value 2.7 metre sit-on-top in Australia

- 1 The hull is wide and extremely stable. Moulded-in ridges on the under side of the hull give structural support, whilst an integrated keel keeps the Ocky on a straight course effortlessly.
- 2 The inclusion of front-to-rear "rocker" combined with soft chines on the bow and hard chines on the rear means the Ocky is very responsive when quick turning is required.
- 3 The tapered bow makes it easy to get the Ocky up and moving, and gives superior lift over waves, chop and swell. The unique shape of the bow deflects water away from the midline keeping the paddler dry.
- 4 "Kiss-offs" are positioned in the seat, foot-wells and storage-well for maximum drainage. They form pillars between the top and bottom of the hull that maintain the structural integrity of the Ocky.
- 5 The seat is extra wide and extremely comfortable. The depth of the seat well provides exceptional lower back support.
- 6 The Ocky maintains floatation with the Australis standard "air lock" buoyancy.
- 7 The foot-wells are positioned slightly lower than the seat, minimising fatigue and cramping. This feature prevents pressure building up in the muscles of the legs and lower back, and keeps your paddling position relaxed and comfortable.  
Please note:  
If your feet are at the same height or slightly higher than your seat, Hamstrings and lower back muscles are on full stretch for extended periods of time. This can result in injury because of a reduced range of motion to absorb the dynamics of paddling, or muscle cramps and tingling due to reduced blood flow to the area or localised pressure on nervous tissues.
- 8 The backrest attaches to stainless steel bars moulded into the hull (not riveted or screwed on) giving the most secure backrest attachment.
- 9 There is a storage-well moulded in at the rear of the Ocky where you can secure cargo in a dry bag or in the custom made Australis Utility Box.

- 10 The profile of the top deck allows the Ocky to be stacked for fuss free storage and transporting. The Ocky can be stacked with another Ocky, the Foxx or the Squid.
- 11 Moulded hand toggles at each end of the Ocky make two person carrying comfortable and easy. The inclusion of moulded hand-holds at the centre of balance make it easy to carry the Ocky by yourself.



An in depth explanation of kayak features can be found on our website. Go to [www.AustralisCanoes.com.au](http://www.AustralisCanoes.com.au) & click the **Features Explained** link

## Ocky Fishing Package

The Ocky fishing package includes:

- Ocky sit-on-top kayak
- Australis deluxe backrest
- Powerblade double paddle
- Paddle leash
- 2 x fixed rod holders at rear of seat well
- Adjusting rod holder in front of paddler
- 1.5 litre pod
- Front deck bungy
- Cargo strap (factory fitted or removable)



## Why you would choose a Ocky...

- Paddle is included in the price - Excellent Value!!
- At 16kg, it is light weight to lift
- Extra wide seat takes paddlers in comfort
- Backrest bars are moulded-in, not riveted or screwed on, so they won't pull out
- Feet are lower than seat for optimal biomechanical paddling position
- Moulded-in hand-holds for easy lifting & carrying
- "Stackable" for easy storage & transporting
- Storage-well moulded-in at rear
- Space between your legs to sit a small child